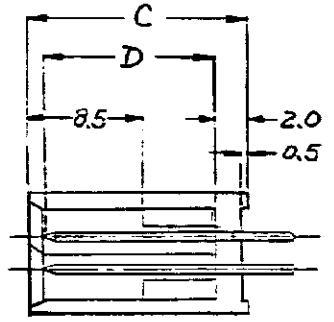
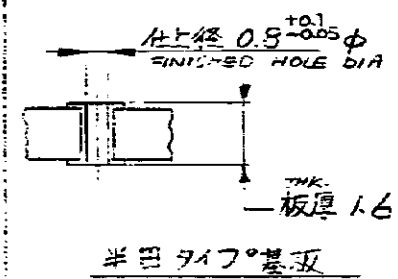
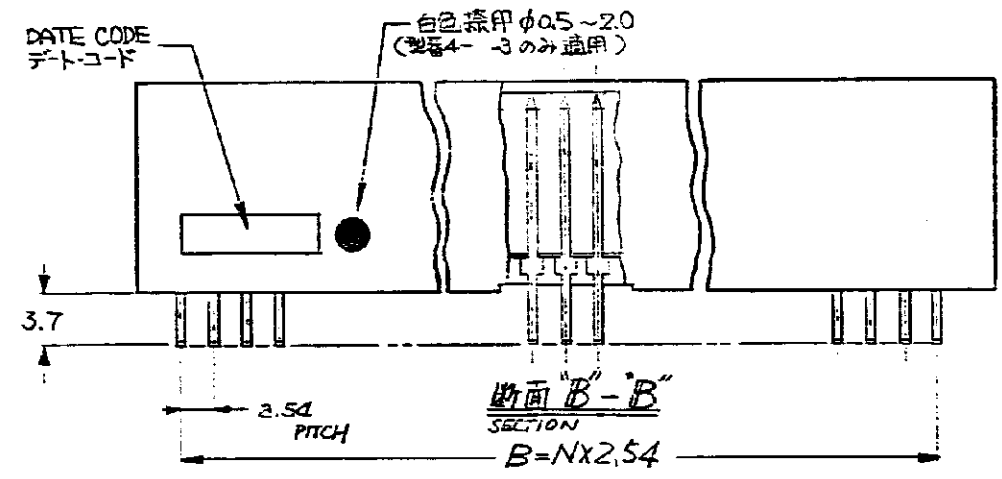
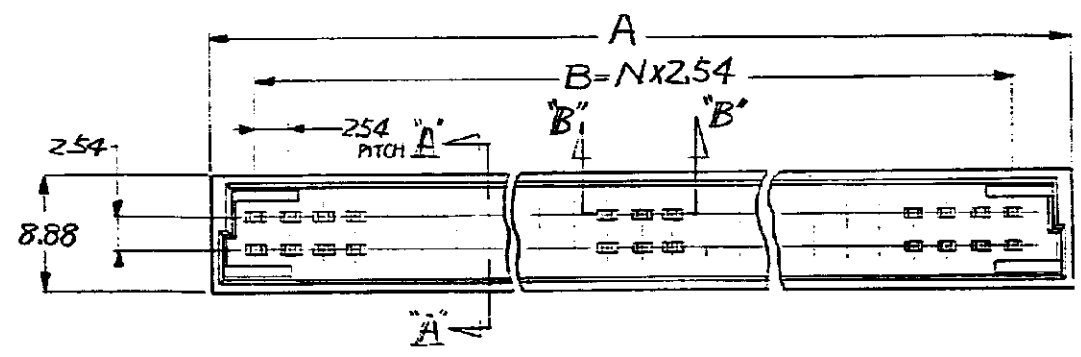


© 1985 AMP (Japan) Ltd. ALL RIGHTS RESERVED. AMP PRODUCTS COVERED BY PATENTS AND OR PATENTS PENDING.



FINISH ON CONTACT AREA OF Pk3-0,4-3; 1.3μ MIN. NICKEL UNDER PLATING, 0.5μ MIN. GOLD PLATING. ANOTHER PLATING SAME AS NOTE 3.
 OBSOLETE PARTS: OBSOLETE CIS STREAMLINING PER D.RENAUD/D.SINISI

NOTE

- HSG MATERIAL; PBT (GLASS) UL94V-0, 3LK
- CONT MATERIAL; CA725 (Cu-Ni-Sn ALLOY)
- FINISH; CONTACT AREA --- 1.3μ MIN. NICKEL UNDER PLATING, 0.2μ MIN GOLD PLATING
 POST --- 1.3μ MIN. NICKEL UNDER PLATING, 2μ MIN TIN PLATING
- ALL DIMENSIONS SHOWN ARE FOR REFERENCE ONLY
- PRODUCT SPEC; 108-5197

REV.	REVISION RECORD	DR.	CHK.	DATE
E1	REVISED PER ECO-10-000444	KK	AEG	JAN10
E	REVISED (FJDO-0207-03)	K.R	S.M	19MAR '04
D	追加 J0921	JS	KS	7/21/87
C	追加 3592	KS	KS	11/26/86
B	変更 35-2272	KS	KS	11/26/86
A	REDRAWN WITH CHANGE	KS	KS	11/26/86

注記

- ハウジング材料; ガラス入 PBT UL94-V-0 黒
- コンタクト材料; CA725 (Cu-Ni-Sn合金)
- メッキ仕様;
 - コネクタ嵌合部: 1.3μ最小の下地Niの上
 - トの2μ最小の金メッキ
 - ポスト部: 1.3μ最小の下地Niの上に
 - 錫メッキ (2μ最小)
- 全ての寸法は参考寸法である。
- 製品規格 108-5197
- 3-0,4-3の コネクタ嵌合部のめっき仕様; 1.3μ最小の下地Niの上に0.5μ最小の金メッキ, その他は3の仕様と同じ

REV.	REVISED	7.8	10.5	48.26	55.9	19	40	4	3
△	OBSOLETE			40.64	48.3	16	34	4	-2
△	OBSOLETE			30.48	38.1	12	26	4	-1
△	OBSOLETE			73.66	81.3	29	60	4	-0
				60.96	68.6	24	50	3	-9
△	OBSOLETE	11.4	16.1	48.26	55.9	19	40	3	-8
				35.56	43.2	14	30	3	-7
				40.64	48.3	16	34	3	-6
				30.48	38.1	12	26	3	-5
△	OBSOLETE			73.66	81.3	29	60	3	-4
				60.96	68.6	24	50	3	-3
△	OBSOLETE			48.26	55.9	19	40	3	-2
				35.56	43.2	14	30	3	-1
△	OBSOLETE	5.8	10.5	48.26	55.9	19	40	3	-0
				40.64	48.3	16	34	2	-9
				30.48	38.1	12	26	2	-8
				73.66	81.3	29	60	2	-7
				60.96	68.6	24	50	2	-6
				48.26	55.9	19	40	2	-5
		13.4	16.1	35.56	43.2	14	30	2	-4
				40.64	48.3	16	34	2	-2
				30.48	38.1	12	26	2	-1
				73.66	81.3	29	60	2	-0
				60.96	68.6	24	50	1	-9
				48.26	55.9	19	40	1	-8
△	OBSOLETE	7.8	10.5	35.56	43.2	14	30	1	-7

MATERIAL	TOLERANCE = 0.25 EXCEPT AS NOTED	tyco Electronics	Tyco Electronics AMP K.K. Kawasaki, Japan
FINISH	DR. 1-30-85 CK. K. Sawada	NAME POST HEADER, STACKING CONN ポスト・ヘッド スタッキングコネクタ	
	DE. 11-30-85 APP. 1-30-85	SIZE A3	LOC J
		SCALE	REV. E1